



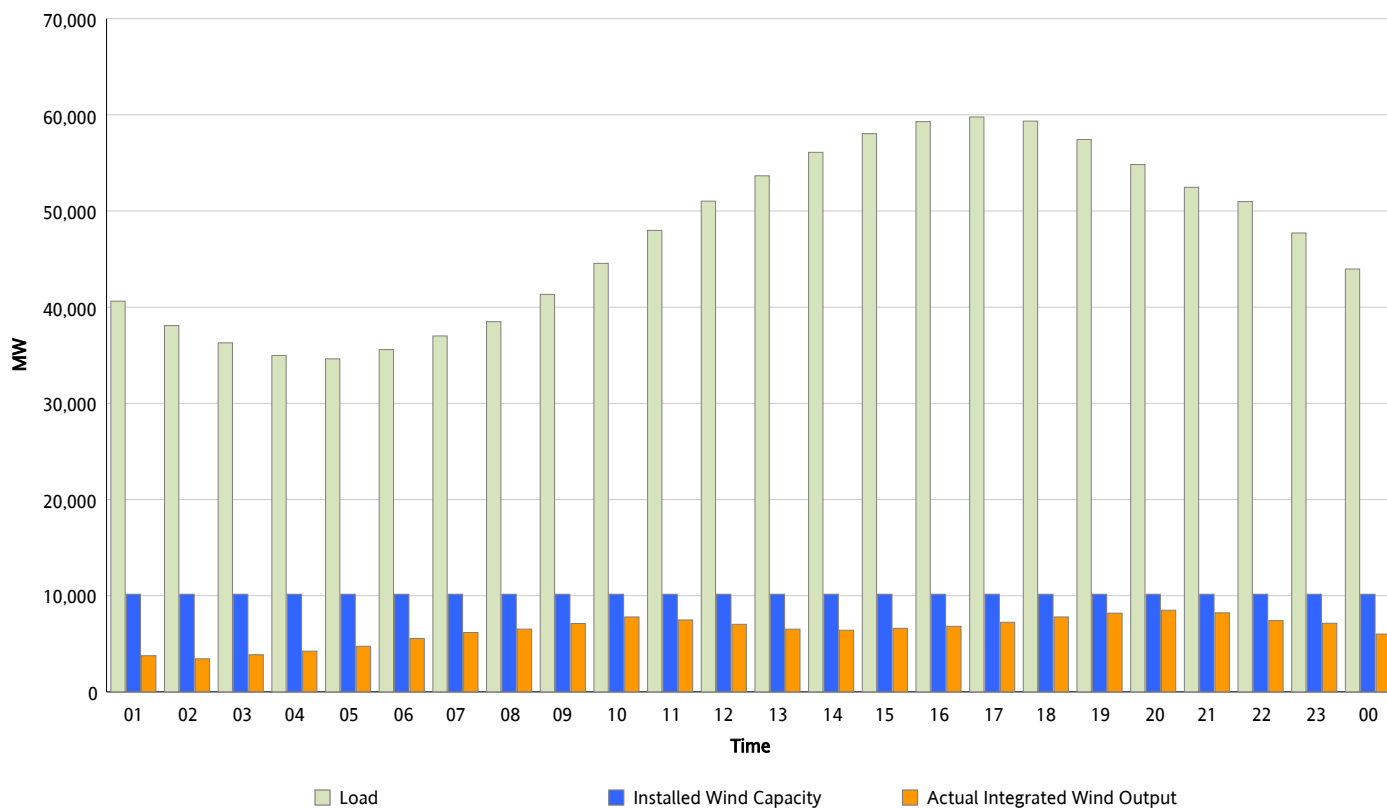
## ERCOT Grid Operations

### Wind Integration Report : 06/21/2013

Peak Load	59,776 MW
Load Peak Hour (HE)	17
Wind Over Peak	7,234 MW
Wind Record 05/02/13	9,674 MW
Max Wind Value*	8,559 MW
Wind Peak Time	19:13
Wind Integration %	15.38 %

#### Hourly Average Actual Load vs. Actual Wind Output

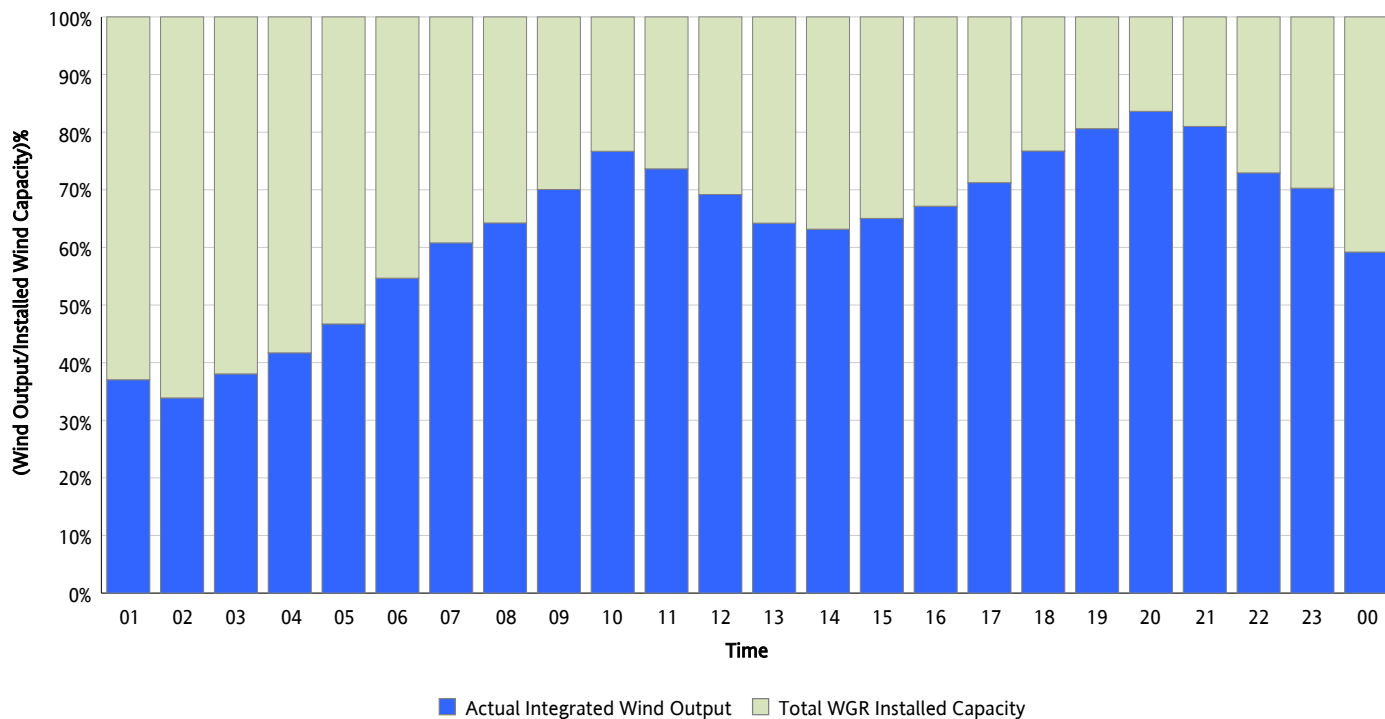
06/21/2013



\* Wind Record and Wind Max represent instantaneous values and the rest of the values are integrated over the hour

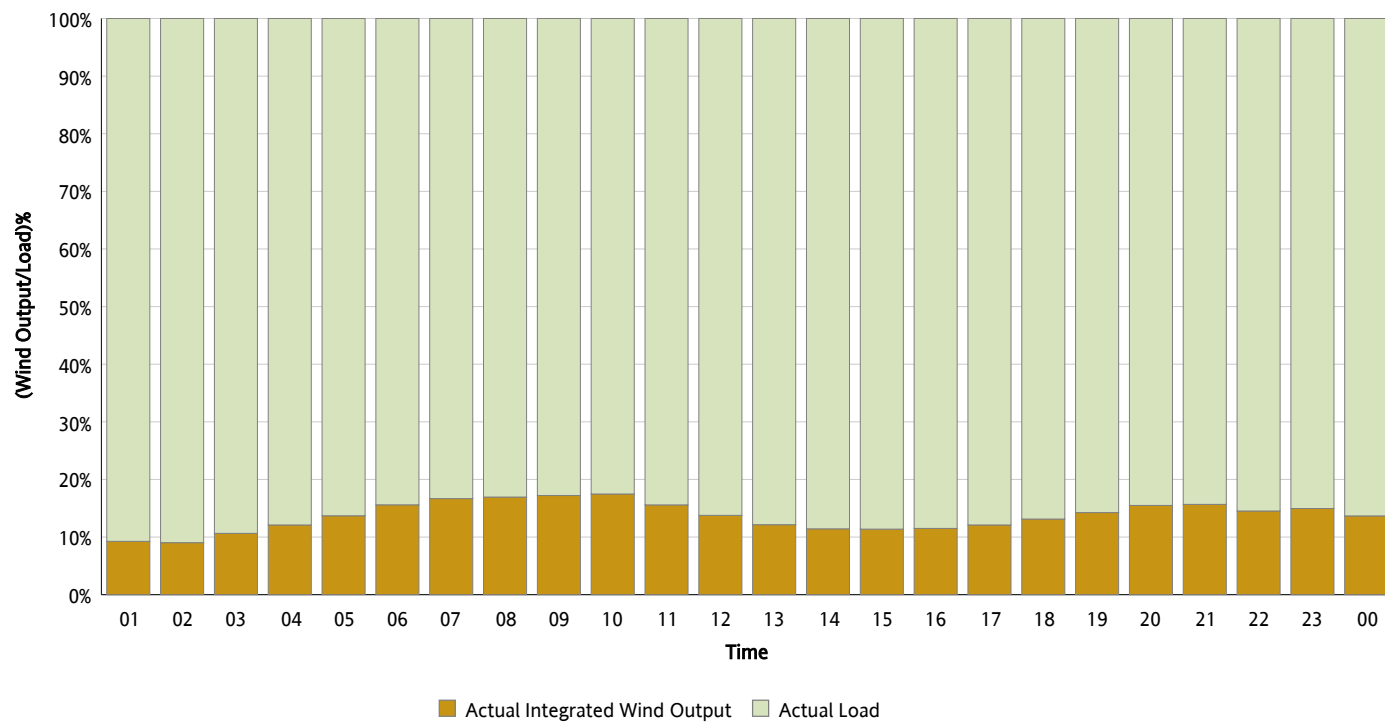
## Actual Wind Output as a Percentage of the Total Installed Wind Capacity

06/21/2013



## Actual Wind Output as a Percentage of the ERCOT Load

06/21/2013



## ERCOT Load vs. Actual Wind Output

06/14/2013 - 06/21/2013

